

Welcome to our Erasmus meeting with the  
topic: Sustainability at our schools



Erasmus+



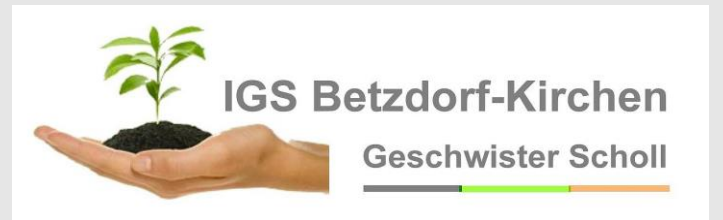
# IGS Betzdorf-Kirchen

## Geschwister Scholl



**Sustainability at the IGS Betzdorf-Kirchen**

# Our Erasmus Group



# Environmental problems on our school grounds (Kirchen)



## **Heating:**

The heating is still turned on after school and the windows are opened.

**Solution:** We should turn off the heating after school.

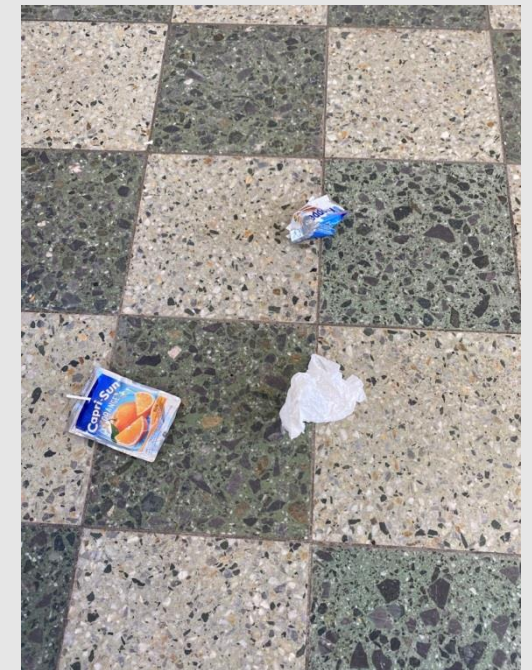
# Environmental problems on our school grounds (Kirchen)



## **Rubbish:**

The buildings and playgrounds are littered with trash, even though we have trash cans.

Solution: We should use the trash cans instead.



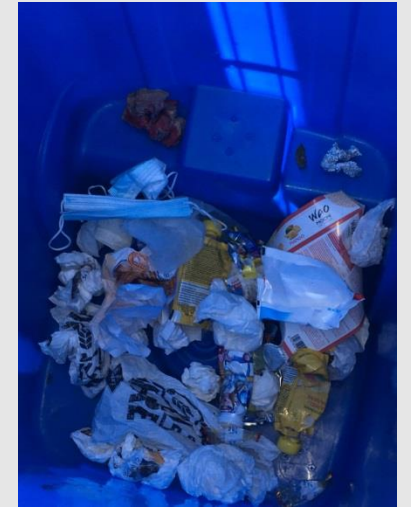
# Environmental problems on our school grounds (Kirchen)



## **One trash can for everything:**

The big trash cans that should be used to separate the trash contain a mix of different kind of trash.

Solution: We should use the cans to separate the trash correctly.

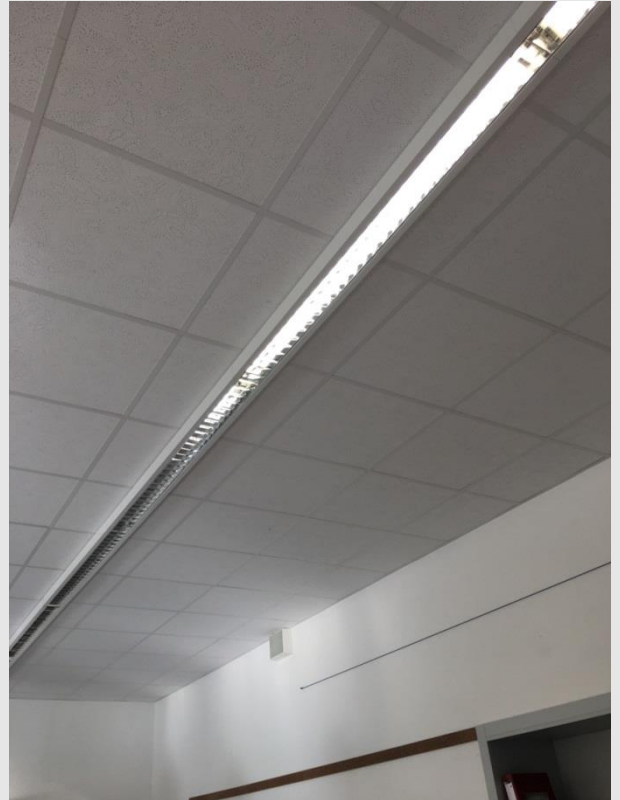


# Environmental problems on our school grounds (Kirchen)

## **Lights on for too long:**

Lights are on for two minutes.

Solution: The lights should be on for one minute.



What do we do for sustainability on the school grounds in Kirchen?

It is good that we have a cleaning service operated by the students of every grade so the school grounds stay clean.





What do we do for sustainability on the school grounds in Kirchen?

Some Green Facilities on the schoolyard.

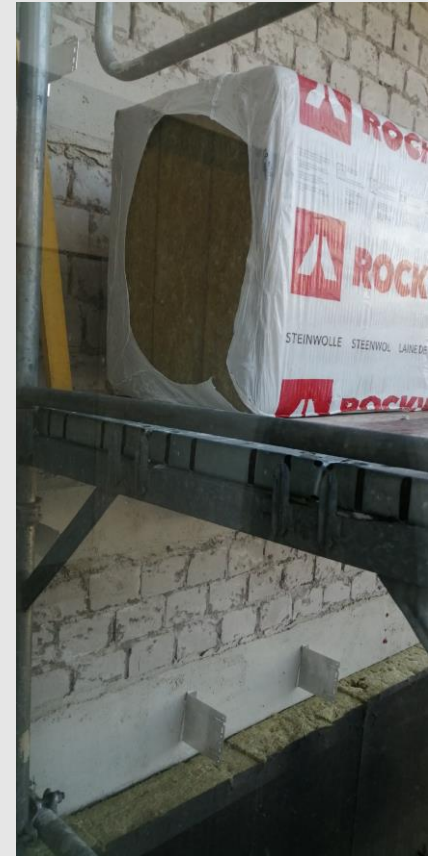


# What do we do for sustainability on the school grounds in Kirchen?



Solar panel on the roof top.

New facade insulation.



# Environmental problems on the school grounds (Betzdorf)



## **Damaged windows:**

Problem: damaged seals on the windows

Solution: Easy replacement of the seals, which costs neither much effort nor money.

# Environmental problems on the school grounds (Betzdorf)



## **Lack of waste separation:**

Problems: Lack of possibility for waste separation

→ just one trash can for each type of trash

Solution: Better and more ways to separate waste

# Environmental problems on the school grounds (Betzdorf)



**Lack of use of available space:**

Problem: No use of available space

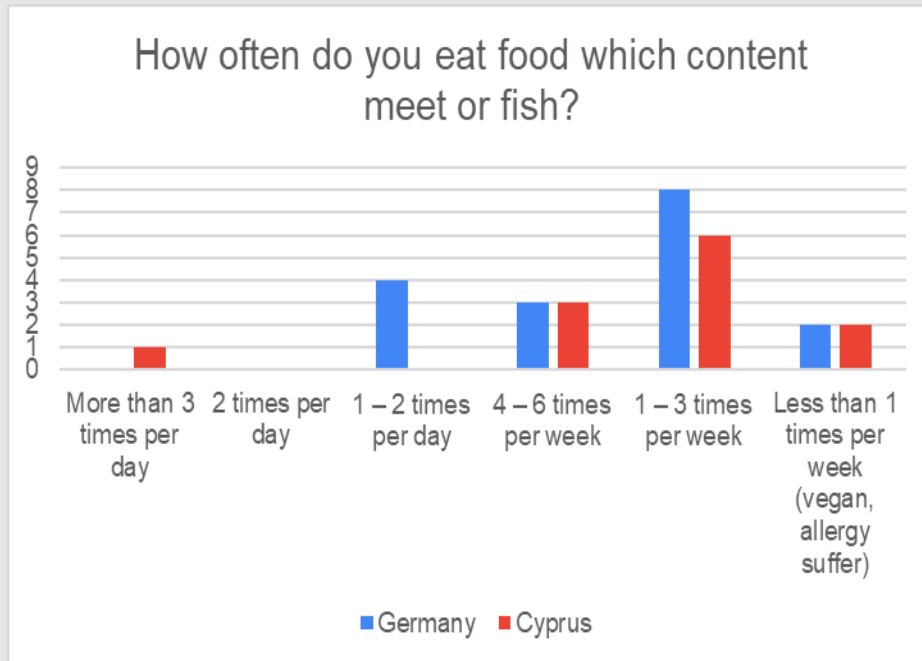
Solution: Planting of green areas

→ raised beds, insect hotels or other plants



# The foodprint calculator

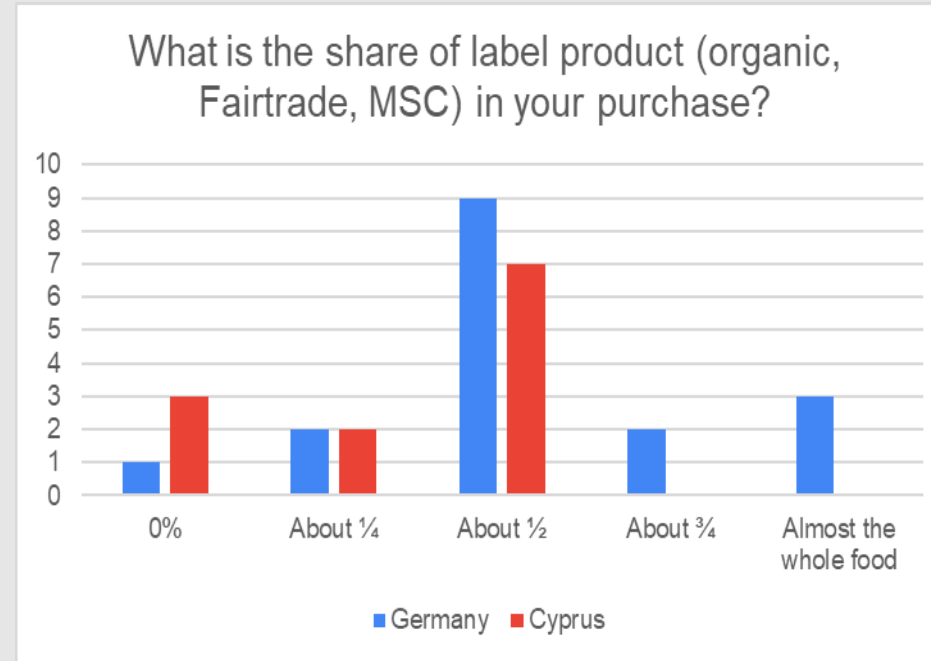
→ Comparison between Germany and Cyprus



Mean values:

Germany: 0,20

Cyprus: 0,22



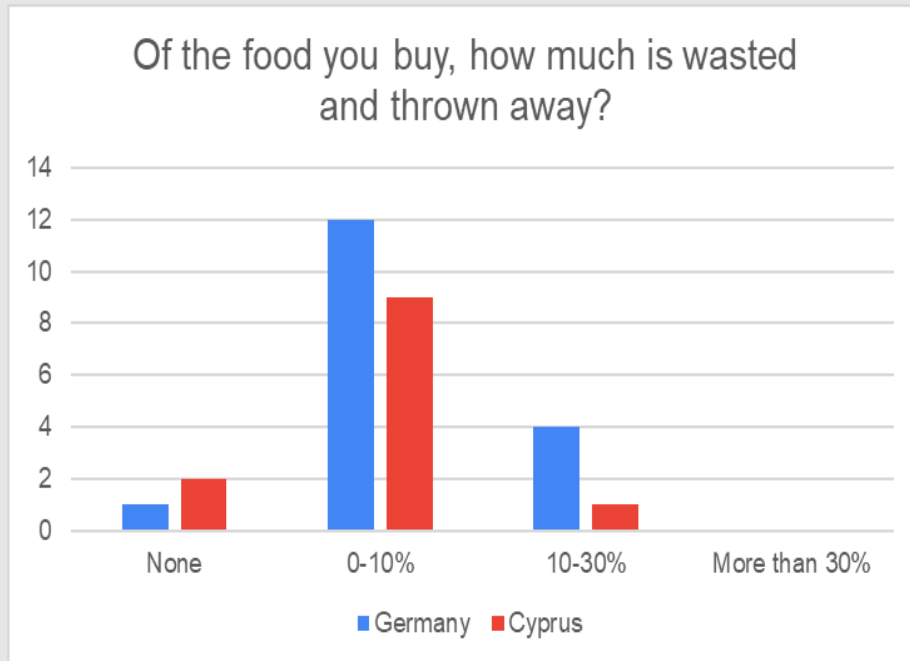
Mean values:

Germany: -0,05

Cyprus: -0,03

# The foodprint calculator

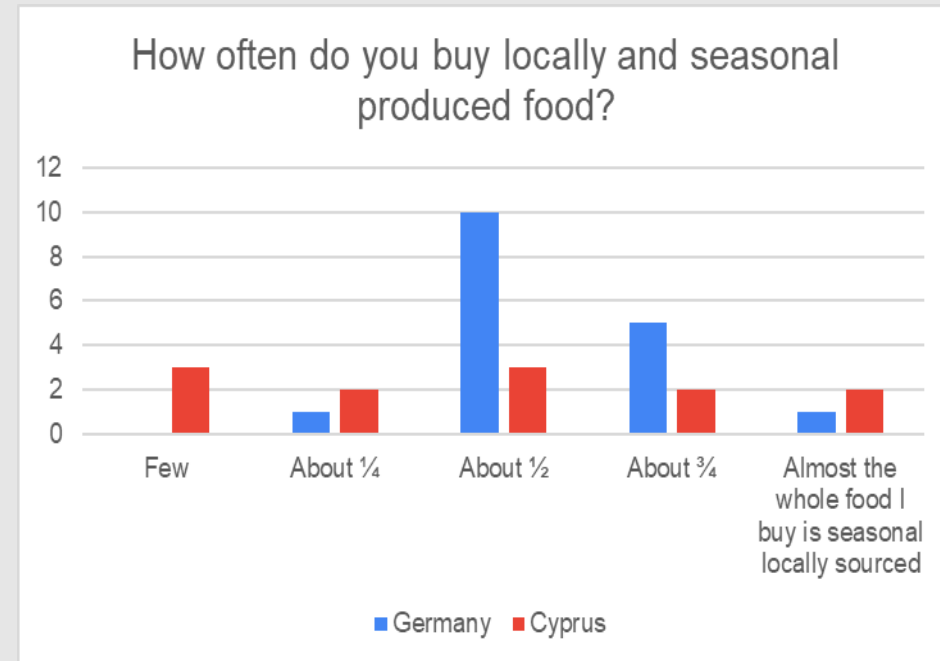
→ Comparison between Germany and Cyprus



Mean values:

Germany: -0,10

Cyprus: -0,11



Mean values:

Germany: 0,27

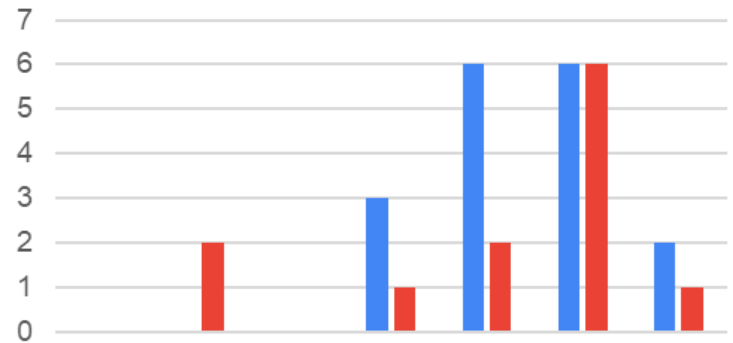
Cyprus: 0,35

# The foodprint calculator

→ Comparison between Germany and Cyprus



How often do you drink or eat milk and milk product like yoghurt, cheese, butter or cream



More than 10 portions per day | 8-10 portions per day | 5-7 portions per day | 3-4 portions per day | 1-2 portions per day | 1-6 portions per week | Less than 1 portions per day

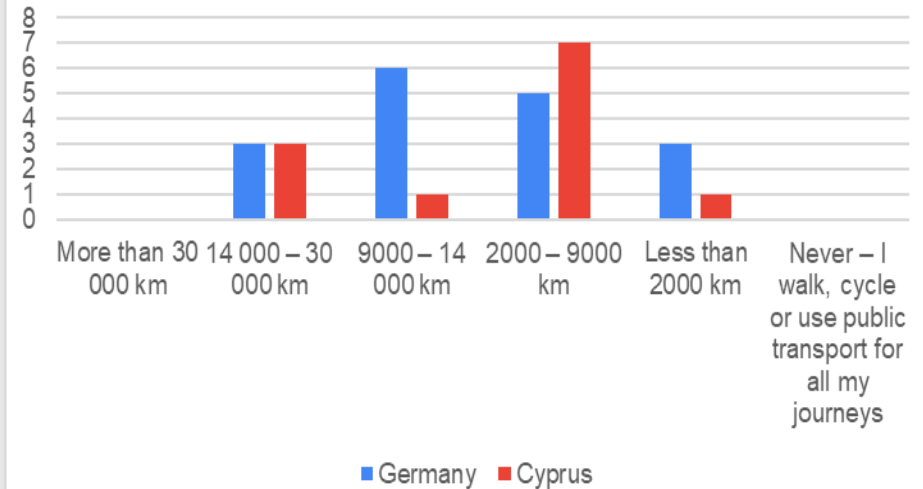
■ Germany ■ Cyprus

Mean values:

Germany: 0,09

Cyprus: 0,15

How many kilometers per year do you travel by car or motorbike as driver or passenger?



■ Germany ■ Cyprus

Mean values:

Germany: 1,80

Cyprus: 1,69